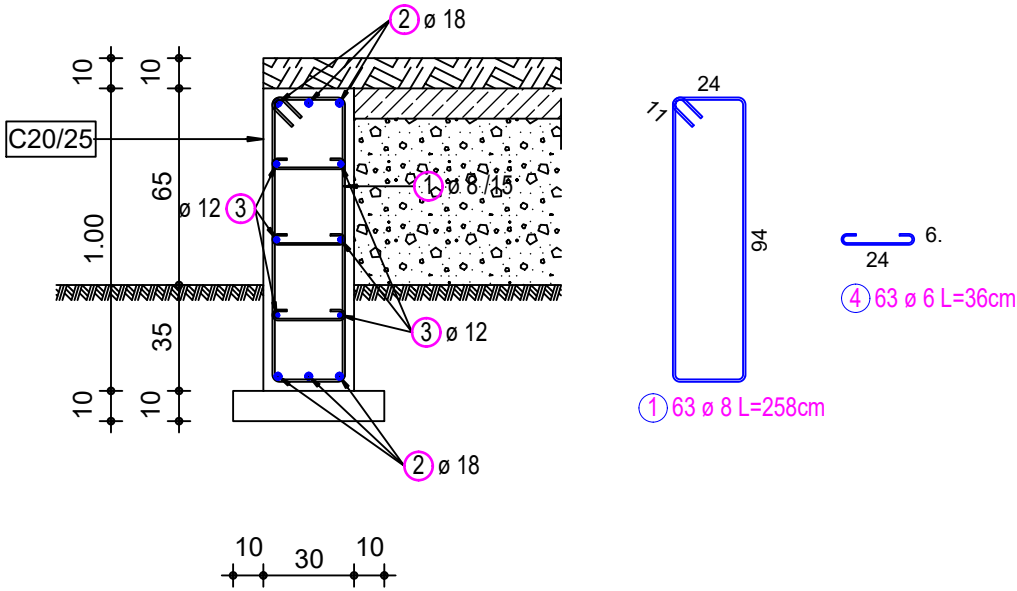
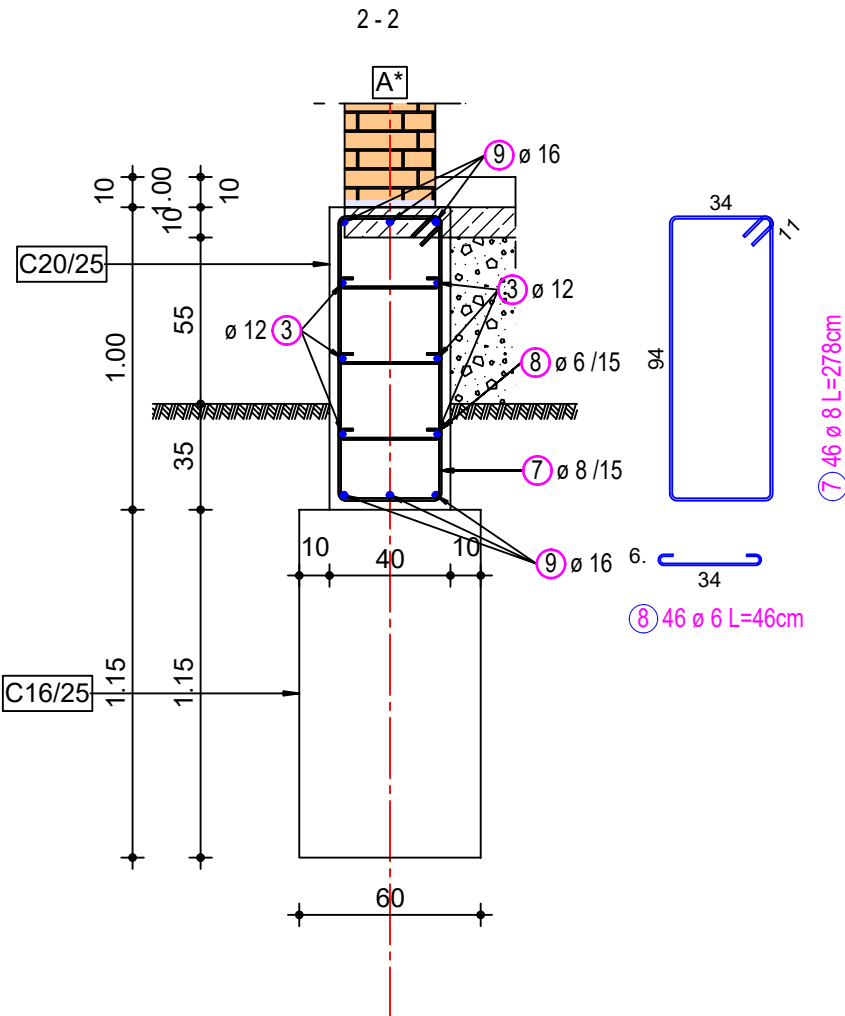


DETALII ARMARE GRINDA FUNDARE GF-1



FUNDATIE CONTINUA FC-1



Lista forme fasonate BST500S GF si FC

Poz.	Buc.	ø	Lungime unitara	Calitate otel	Bare cotate (fara scara)	Lungime totala	Greutate
		[mm]	[m]			[m]	[kg]
1	324	8	2.58	BST500S		835.92	330.19
2	1	18	m lin	BST500S		211.20	421.98
3	1	12	m lin	BST500S		371.91	330.26
4	972	6	0.36	BST500S		349.92	77.68
5	12	18	9.00	BST500S		108.00	215.78
6	12	12	8.70	BST500S		104.40	92.71
7	167	8	2.78	BST500S		464.26	183.38
8	501	6	0.46	BST500S		230.46	51.16
9	1	16	m lin	BST500S		160.71	253.76

Greutate totala BST500S (kg): 1956.90 kg

BENEFICIAR		U.A.T. COMUNA ALBOTA		15/2024	
PROIECTANT GENERAL		OPM NEW EXCLUSIVE GROUP S.R.L.			FAZA DTAC/PT
<div>PROIECTANT STRUCTURA REZISTENTA</div> <div>GROZAV PROIECT SRL</div> <div>CUI: 33830159 REG COM: J3/1518/2014</div> <div>PITESTI, ARGES</div> <div>L.S.</div>				<div>Proiect:</div> <div>EXTINDERE SEDIU PRIMARIE, COMUNA ALBOTA, JUDEȚUL ARGEȘ</div> <div>Adresa: COMUNA ALBOTA, JUDEȚUL ARGEȘ</div>	
Specificatie	Nume	Semnatura	Data:	OBIECT:EXTINDERE SEDIU PRIMARIE	Scara 1:50
Proiectat	Ing. Grozav N		12.2024		
Desenat	Ing. Grozav N		Revizia	<u>Titlu plansa:</u> DETALII ARMARE GRINDA FUNDARE GF-1 FUNDATIE CONTINUA FC-1	NR.PLAN R-04
	Allplan 2023		0		